

Increased safety | Better protection

## Qompact roller shutters









Increased protection against intruders and the weather.

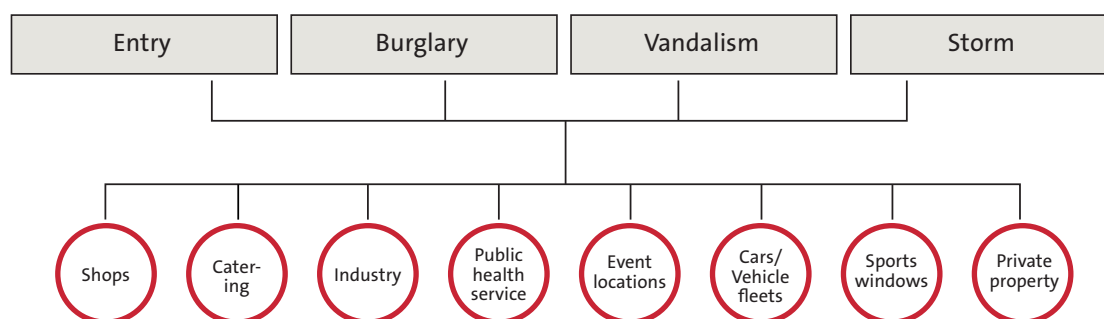
## Application areas and scenarios of Qompact.

Qompact is the specialist for physical entry control in security-sensitive areas.

Developed for the requirements of private and public spaces.

Roller lock is a term used to describe a rolling closure for windows, doors, gates and structural spaces. Compared to conventional roller shutters, the focus here is on offering greater resistance to physical attack.

Standard security measures are often inadequate to prevent burglaries, vandalism, storm damage and unauthorised entry. Qompact secures and protects your property when the going gets tough. Offering safety and security in various sectors and areas of application, for example windows, shop windows and side entrances, as well as private homes.





The complete system.

## Fact check: Qcompact roller shutter

The Alulux Qcompact roller shutter is a complete system. Ideal solution for windows up to a maximum element width of 4.40 m.

A Qcompact roller shutter prevents unauthorised entry to homes. It can be used not only as a roller shutter but also inside shops. The Qcompact system is also frequently used for indoor areas, for example in shop windows or entrance doors to shops.

This system, installed directly behind a window, entrance door or wall opening, then offers effective anti-burglary and entry protection. Indoor assembly of the Qcompact system thus provides users with additional protection of their premises. When using punched slats, the items on display in the window can still be seen by prospective customers but are protected against would-be thieves and vandals.

|  |   |
|--|---|
| Small, extruded roller shutter box - very tight winding curtain            | ✓ |
| Effective anti-burglary protection due to Q-XL security side locking       | ✓ |
| Shock and impact resistant   | ✓ |
| Fully extruded system - optimum security, strong material                  | ✓ |
| Storm tested   | ✓ |
| Secured by a motor brake against being forced open                         | ✓ |
| Motor operation as standard  | ✓ |
| Electric motor as standard   | ✓ |
| HQ premium powder-coated surface - excellent surface protection            | ✓ |
| Sealed and punched slats can be combined - offering great visual diversity | ✓ |
| Wireless remote control and wireless comfort kit with access code          | ✓ |







Technical data.

Box sizes and types.

The roller shutter box is considerably smaller than many systems available on the market with comparable element heights. This means Qcompact can also be easily installed in confined structural spaces and as a left roller on the façade. The box and slats are made of extruded aluminium.

| Box size         | = Element heights with aluminium Q slat |
|------------------|---|
| Box size 15.0 cm | = Element height 1.60 m                 |
| Box size 16.5 cm | = Element height 2.35 m                 |
| Box size 18.0 cm | = Element height 2.75 m                 |
| Box size 20.5 cm | = Element height 3.50 m                 |

Max. element width 4.40 m. Max. element height 3.50 m

SG 90, 3-parts  
Box size 150, 165, 180

| Box size | A   | B   |
|----------|-----|-----|
| 150*     | 152 | 152 |
| 165      | 167 | 167 |
| 180      | 182 | 182 |
| 205      | 207 | 207 |

SG 90, 4-parts  
Box size 150, 165, 180, 205

SG 20, 3-parts  
Box size 150, 165, 180

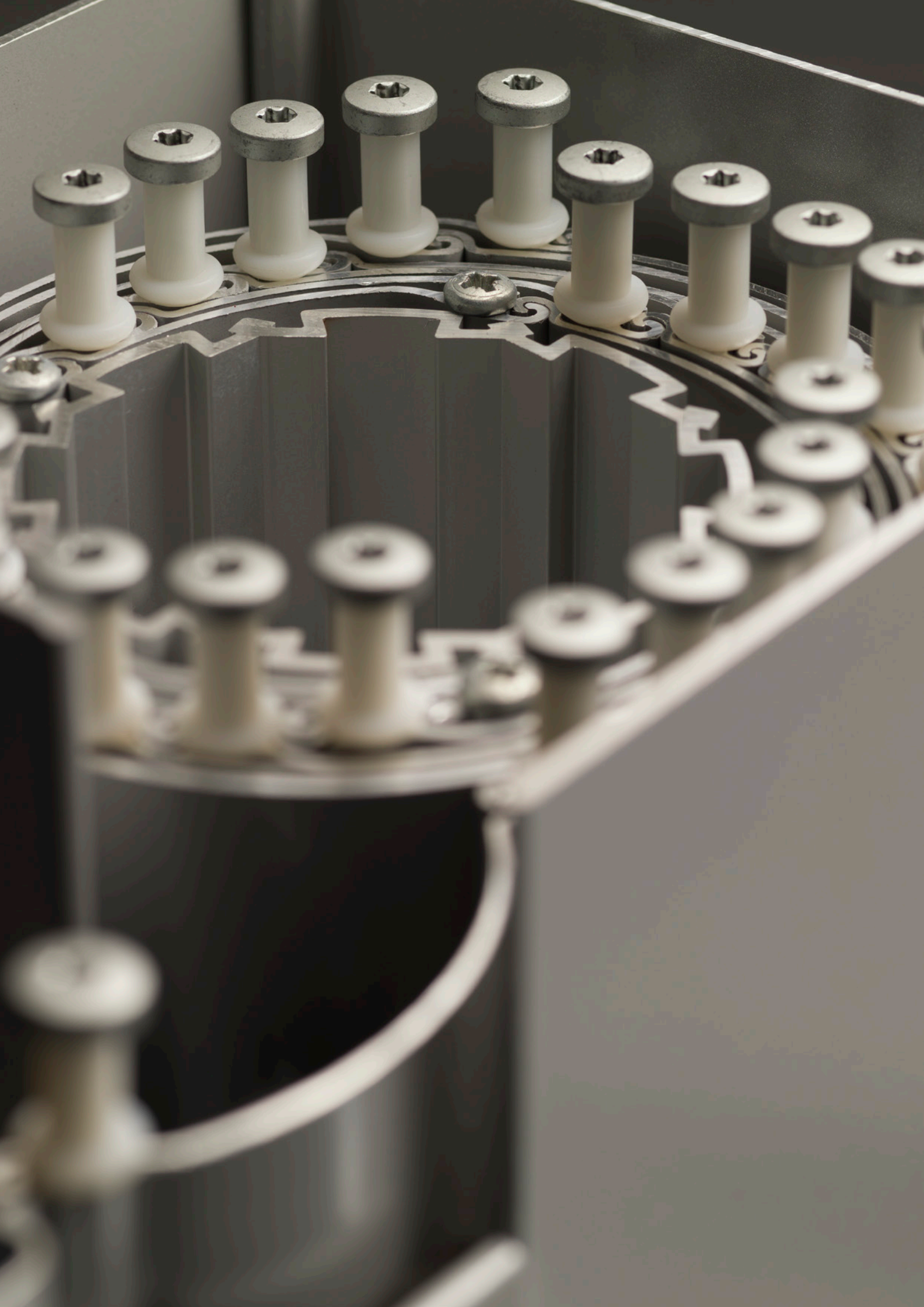
| Box size | A   | B   |
|----------|-----|-----|
| 150*     | 152 | 152 |
| 165      | 167 | 167 |
| 180      | 182 | 182 |
| 205      | 207 | 207 |

SG 20, 4-parts  
Box size 150, 165, 180, 205

SGF, 3-parts  
Box size 150, 165, 180, 205

| Box size | A   | B   |
|----------|-----|-----|
| 150*     | 153 | 167 |
| 165      | 169 | 183 |
| 180      | 184 | 197 |
| 205      | 210 | 214 |

\* only Qcompact roller shutter.





Unique winding properties.

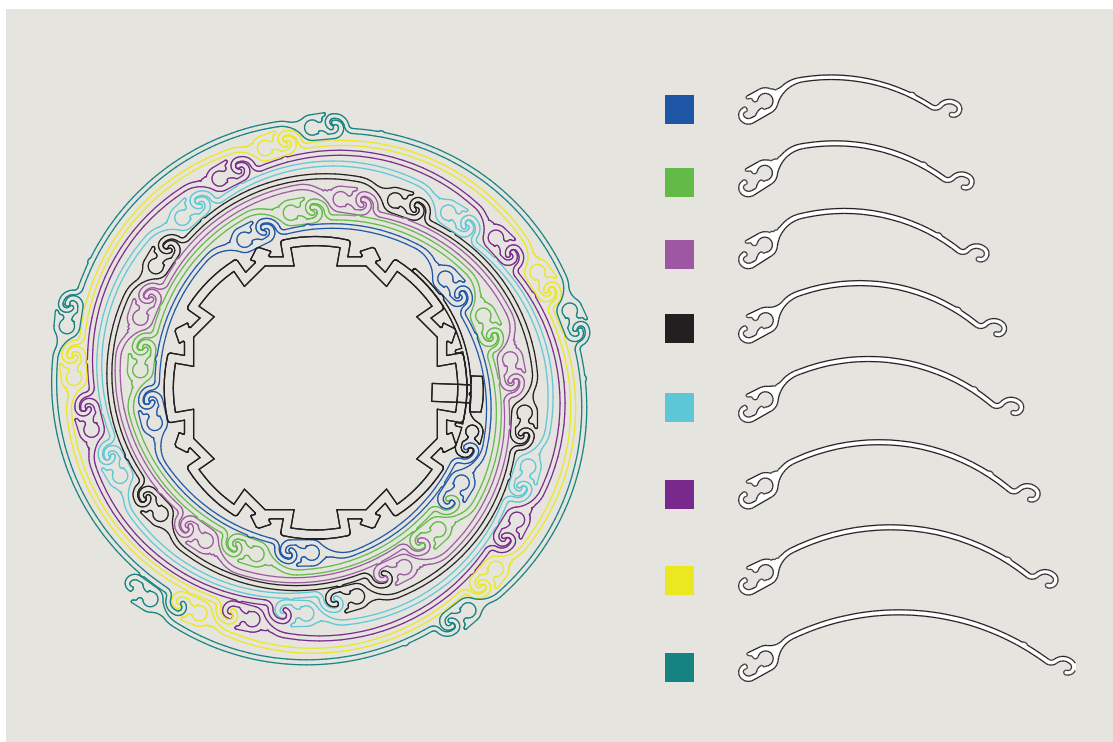
## Maximum material – minimum space required.

How is the high material thickness combined with a compact design achieved?

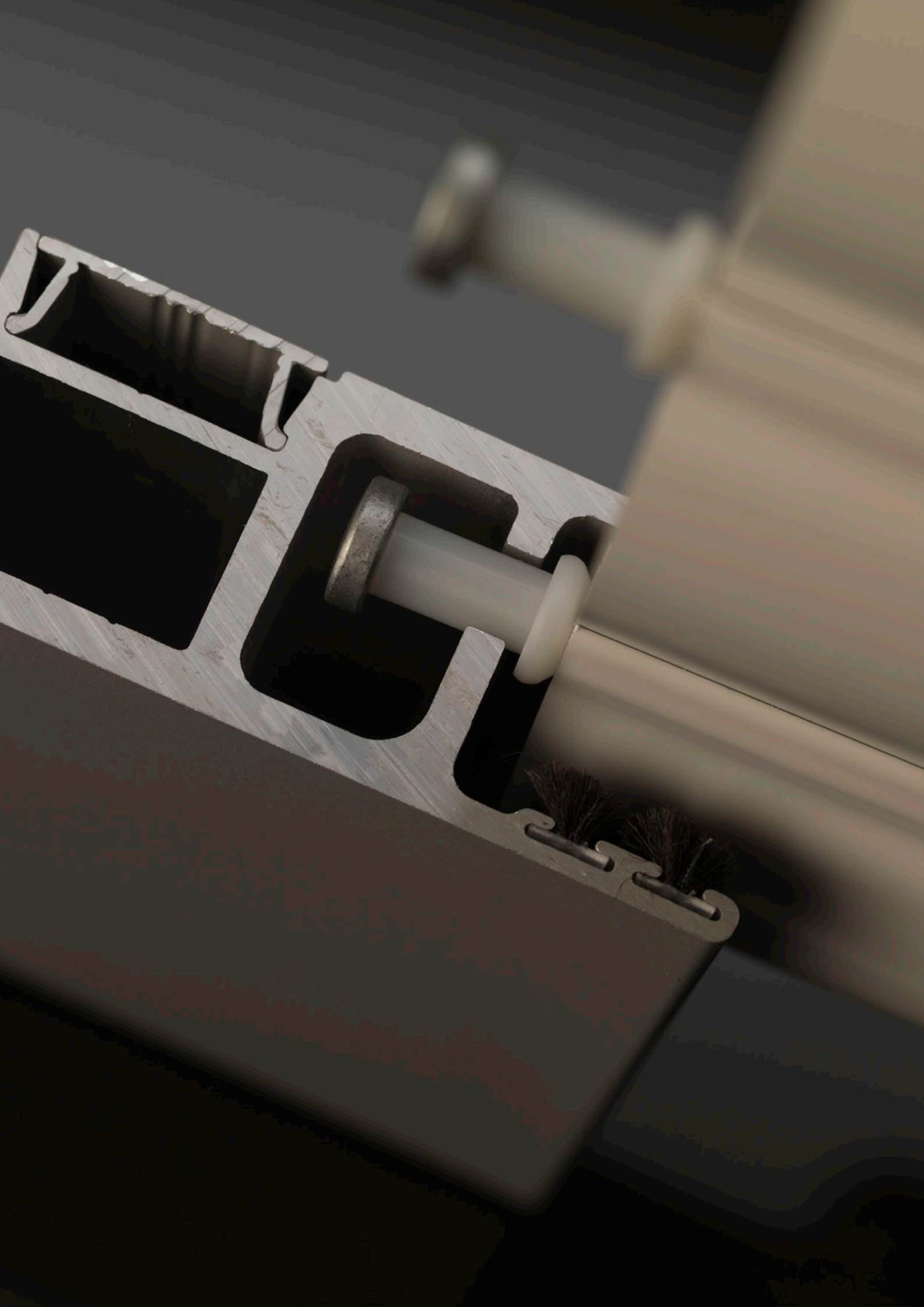
The solid aluminium slats fit closely together thanks to the patented winding system.

A Qcompact curtain consists of aluminium slats of varying dimensions:

The wound-up slats adapt to the respective coil radius. And this guarantees an extremely space-saving winding diameter. Resulting in a large shutter height with a small box.









## Overview.

## Equipment and optional equipment.

| ● Standard   ○ Optional equipment                            | Qcompact roller shutter |   |
|--|-------------------------|---|
| Patented slat winding system                                 | ●                       | Tight winding, space saving   |
| XL mushroom head security side locking                       | ●                       | Impossible to lever out of the lateral guide channel                            |
| Security guide channel                                       | ●                       | Special guidance of the XL mushroom head security side locking                  |
| Secured against being forced open                            | ●                       | To enhance anti-burglary protection   |
| Fully aluminium; painted, powder-coated aluminium components | ●                       | Reliable, durable, high rigidity, extremely corrosion resistant                 |
| Bespoke solutions  | ●                       | Millimetre-accurate construction  |
| Electric motor as standard                                   | ●                       | Convenient opening and closing  |
| HQ premium surface   | ●                       | Scratch and wear resistant, splendid appearance, UV resistant, easy to maintain |
| Possibility to integrate punched slats                       | ○                       | Use of daylight, design element   |
| Radio remote control   | ○                       | Remote operation possible   |
| Available with io drive                                      | ○                       | Home control  |

Traffic white  
RAL 9016

White aluminium  
RAL 9006

Anthracite grey  
RAL 7016

Standard colours for Qcompact roller shutters.  
Other RAL colours available upon request.



Anti-burglary  
protection



Storm tested



Sun protection



Weather  
protection



Privacy  
protection



Entry  
control



Additional  
indoor  
protection



Lockable



Shop  
windows



# ALULUX®

[www.alulux.de](http://www.alulux.de)

© The copyright for objects created and published by Alulux GmbH remains with Alulux GmbH.

No part of this publication may be reproduced, stored in a retrieval system, or transmitted in any way or by any means, electronic, mechanical, photocopying, recording or otherwise, without the express prior permission of Alulux GmbH.

---